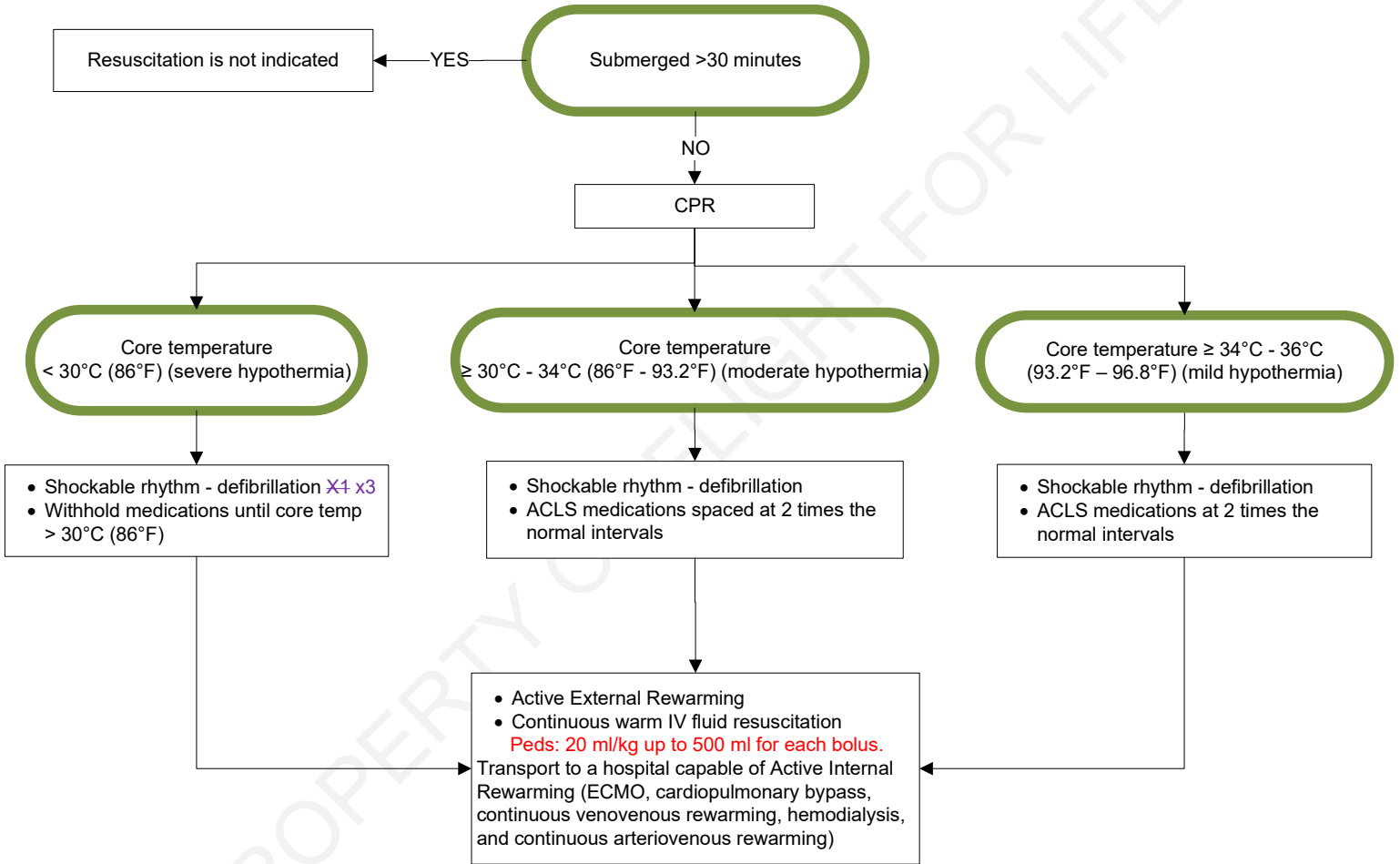




Drowning/Hypothermic Cardiac Arrest



If Great Lakes Experimental Dive Team – patient to be transported to St. Luke's.
If dive master accompanies patient, safety briefing will be performed prior to liftoff.

This guideline does not substitute for sound clinical judgment.

DocuSigned by: *Nick Lehouillier* 11/14/2025 | 9:26:28 AM CST
 Approved by: Nick Lehouillier, RN, Chief Flight Nurse
 Signed by: *William B. Weir* 11/14/2025 | 9:52:16 AM CST
 Approved by: William B. Weir, MD, Medical Director
 Reviewed 9/10/25 Revised 9/10/25 Posted 11/26/25 Standards and Practice Committee

Reference:
https://www.uptodate.com/contents/accidental-hypothermia-in-adults-management?search=hypothermia%20treatment&source=search_result&selectedTitle=2%7E150&usage_type=default&display_rank=2#H1990513394
https://www.ahajournals.org/doi/10.1161/circ.102.suppl_1.i-229