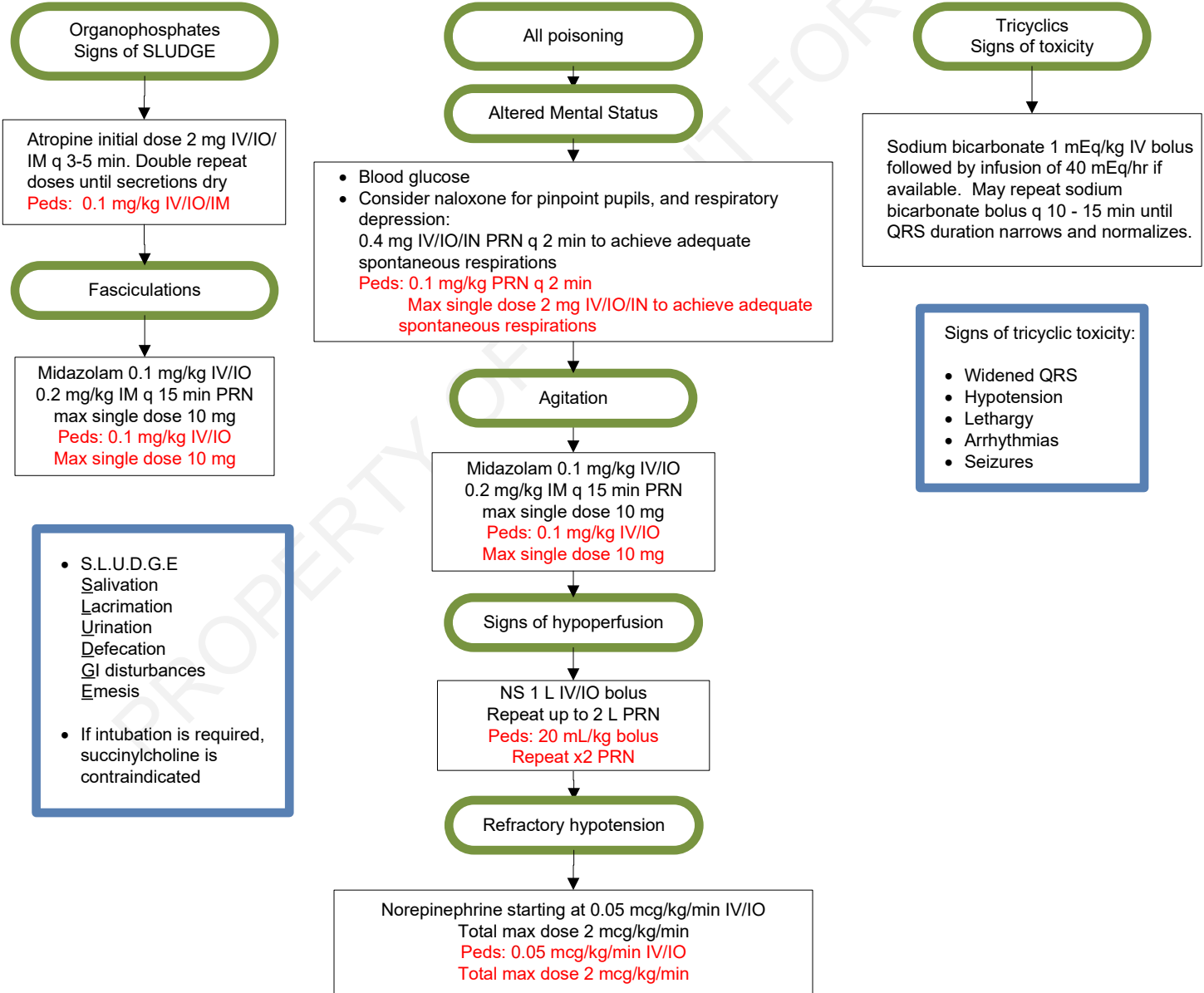




# Poisoning



- Patient decontaminated by on-scene trained personnel, including clothing and personal belongings
- FFL crew should never perform any decontamination
- Flushing of exposed body part may continue during transport if no risk of contamination to asset or crew members
- Consider referencing the DOT Emergency Response Guide Book
- Consider contacting Poison Control through Comm Center



This guideline does not substitute for sound clinical judgment.

DocuSigned by:  
  
 Approved by: Nick Lehouillier, RN, Chief Flight Nurse  
 11/14/2025 | 9:26:28 AM CST

Signed by:  
  
 Approved by: William B. Weir, MD, Medical Director  
 11/14/2025 | 9:52:16 AM CST

Reviewed 10/8/25 Revised 10/8/25 Posted 11/26/25 Standards and Practice Committee

Reference: Karydes HC. Cyclic Antidepressants. In: Sherman SC, Weber JM, Schindlbeck MA, Rahul G. P. eds. Clinical Emergency Medicine, 1e. McGraw Hill; 2014. Accessed June 01, 2022